

# BEH600 Edge Banded Panel

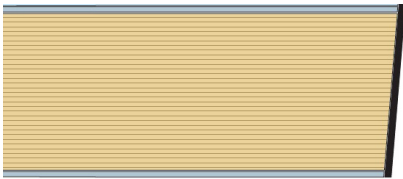
## PSA MOB PF2 PS/SPU Heavy Grade

The panel consists of a high grade FSC® certified 38mm high density particle board core, in a sandwich construction with steel top and bottom sheet. This then has a full depth ABS edge band applied creating a fully encapsulated 600mm<sup>2</sup> panel to be laid with complete electrical continuity and has a high resistance to damage.

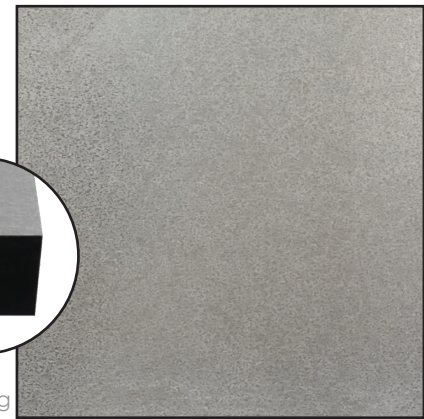
Product	Panel Grade	Point Load (25mm x 25mm)	Load Over (300mm x 300mm)	Uniform Distributed Load	Panel Thickness (Nominal)	System Weight (Typical)
BEH600	Heavy	4.5 kN	N/A	12.0 kN/m <sup>2</sup>	39mm	43kg/m <sup>2</sup>

### Certification

The panel is fully tested by an independent UKAS accredited laboratory to the PSA MOB PF2 PS/SPU March 1992 Heavy Grade specification and is certified as being fully compliant. All of the Permaflor PSA panels have a 3 times working load safety factor, Class "O" spread of flame resistance and a 25 year warranty.



Galvanised steel top and bottom sheet



Full depth ABS edging

### Finish

All of the Permaflor edge banded panels can have a wide range of factory bonded finishes that include wood, ceramic tile, carpet, high pressure laminate and vinyl. All of the edge banded factory bonded panels can be perforated for air flow. Whatever your requirement, Permaflor will have the flooring solution to suit you.

### Manufacture

All panels are manufactured in our facility in the UK, which allows us to offer total flexibility whilst maintaining the highest possible quality standard and ensures fast reaction and a reliable service. Materials used are sourced from high quality suppliers and use renewable, sustainable sources and suppliers wherever possible. We can also offer a bespoke service and specialise in replicating and reproducing existing raised floors.



**Permaflor**  
access flooring solutions

The first choice for access flooring systems

For more information call  
**01432 347 722**  
sales@permaflor.co.uk