

# BG3LS Steel Encapsulated Screw Down Panel

## BSEN12825:2001 - 3/A/3/2 Medium Duty

The panel consists of a high grade, FSC® certified, 25mm high density particle board core, with a steel top sheet and bottom tray, all pressed together creating a fully steel encapsulated 600mm<sup>2</sup> panel with predrilled holes to be screw fixed with complete electrical continuity. The screw down panel gives added stability and security as the void is inaccessible without specialist tools and is dimensionally accurate with a high resistance to damage.

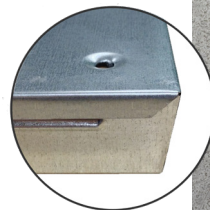
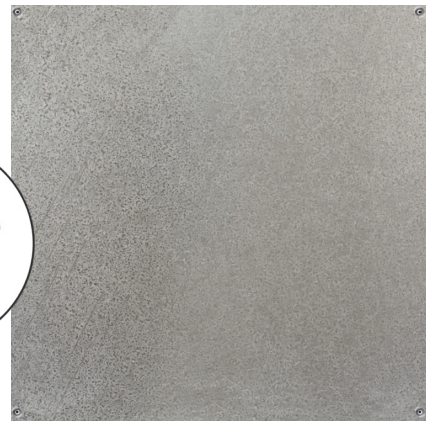
Product	Panel Grade	Classification	Safety Factor	Ultimate Load	Panel Thickness (Nominal)	System Weight (Typical)
BG3LS	Medium	3/A/3/2	3x	> 8.0kN	26mm	32kg/m <sup>2</sup>

### Certification

The panel is fully tested to the BSEN12825:2001 3/A/3/2 specification and is fully compliant. The Permaflor BG3LS panels have a 3 times working load safety factor, Class "O" spread of flame resistance and 25 year warranty.



Galvanised Steel Top Lid and Bottom Tray



Wrap Around Tray Forming Encapsulation  
Pre-drilled Holes for Screw Fixing

### Finish

All of the Permaflor Steel Encapsulated panels are designed to be overlaid with finishes such as loose laid carpet tiles. Whatever your requirements, Permaflor will have the flooring solution to suit you.

### Manufacture

All panels are manufactured in our flexible manufacturing facility in the UK, which allows us to offer total flexibility whilst maintaining the highest possible quality standard and ensures fast reaction and a reliable service. Materials used are sourced from high quality suppliers and use renewable, sustainable sources and suppliers wherever possible. We can also offer a bespoke service and specialise in replicating and reproducing existing raised floors.



**Permaflor**  
access flooring solutions

The first choice for access flooring systems

For more information call  
**01432 347 722**  
sales@permaflor.co.uk